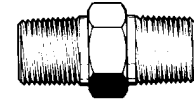


FACTORY ASSEMBLED AIR HOSE ASSEMBLIES

- TYPE B
- Single Swivel
- Permanent Fittings
- Meets All SAE J1402 and DOT 106 Specifications



Hose Rack Part No. T-A-691020



HOSE END ADAPTORS
Changes NPTF end fitting sizes on hose assemblies.

3/8" HOSE, 1/4-18 NPTF FITTINGS		
T-A-16012 12"	T-A-16028 28"	T-A-16042 42"
T-A-16014 14"	T-A-16030 30"	T-A-16044 44"
T-A-16018 18"	T-A-16032 32"	T-A-16046 46"
T-A-16020 20"	T-A-16034 34"	T-A-16048 48"
T-A-16022 22"	T-A-16036 36"	T-A-16054 54"
T-A-16024 24"	T-A-16038 38"	T-A-16060 60"
T-A-16026 26"	T-A-16040 40"	T-A-16066 66"
		T-A-16072 72"

Hose I.D.	NPTF Size	Part No.
3/8"	1/4"	T-A-N12306
3/8"	3/8"	T-A-N12306G
1/2"	3/8"	T-A-N12306AG

3/8" HOSE, 3/8-18 NPTF FITTINGS		
T-A-16614"	T-A-16630"	T-A-16644"
T-A-16618"	T-A-16632"	T-A-16646"
T-A-16620"	T-A-16634"	T-A-16648"
T-A-16622"	T-A-16636"	T-A-16654"
T-A-16624"	T-A-16638"	T-A-16660"
T-A-16626"	T-A-16640"	T-A-16672"
T-A-16628"	T-A-16642"	



RUBBER AIR BRAKE HOSE DOUBLE SWIVEL

- Both ends swivel.
- Minimum burst pressure of 900 PSI.
- Conforms to SAE J1402 specifications.
- Maximum operating pressure of 225 PSI.
- Operating temperature of -40°F to +200°F.



1/2" HOSE, 3/8-18 NPTF FITTINGS		
T-A-16314 14"	T-A-16330 30"	T-A-16344 44"
T-A-16318 18"	T-A-16332 33"	T-A-16346 46"
T-A-16320 20"	T-A-16334 34"	T-A-16348 48"
T-A-16322 22"	T-A-16336 36"	T-A-16354 54"
T-A-16324 24"	T-A-16338 38"	T-A-16360 60"
T-A-16326 26"	T-A-16340 40"	T-A-16372 72"
T-A-16328 28"	T-A-16342 42"	T-A-16384 84"

Part No.	Hose Size	Fitting Size
T-A-16420	3/8"	3/8"
T-A-16424	3/8"	3/8"
T-A-16426	3/8"	3/8"
T-A-16428	3/8"	3/8"
T-A-16432	3/8"	3/8"
T-A-16436	3/8"	3/8"

Part No.	Hose Size	Fitting Size
T-A-16444	3/8"	3/8"
T-A-16448	3/8"	3/8"
T-A-16452	3/8"	3/8"
T-A-16456	3/8"	3/8"
T-A-16466	3/8"	3/8"
T-A-16672	3/8"	3/8"

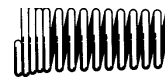
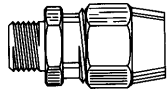
BULK AIR BRAKE HOSE



- TYPE B
- Meets All SAE J1402 Specifications
- 200 P.S.I.

	3/8" I. D. HOSE	1/2" I.D. HOSE
250 Foot Coil	Part No. T-A-1014307-250	Part No. T-A-1014310-250
50 Foot Coil	Part No. T-A-1014307-50	Part No. T-A-1014310-50

REUSABLE AIR BRAKE HOSE FITTINGS



NUT
For Fitting Without Spring
3/8" Hose
Part # T-A-11906

NUT
For Fitting With Spring
Part # T-A-11910

SPRING
3/8" Hose
Part # T-A-11911

FERRULE
3/8" Hose: **Part # T-A-11912**
1/2" Hose: **Part # T-A-11812**

FITTING ASSEMBLY
NPTF Male
Less Guard Spring
For 3/8" Hose
1/4" NPTF **Part # T-A-11903**
3/8" NPTF **Part # T-A-11904**
1/2" NPTF **Part # T-A-11905**
For 1/2" Hose
3/8" NPTF **Part # T-A-11804**
1/2" NPTF **Part # T-A-11805**

FITTING ASSEMBLY
With Spring Guard
For 3/8" Hose
1/4" NPTF **Part # T-A-11900**
3/8" NPTF **Part # T-A-11901**
1/2" NPTF **Part # T-A-11902**
For 1/2" Hose
3/8" NPTF **Part # T-A-11801**
1/2" NPTF **Part # T-A-11802**

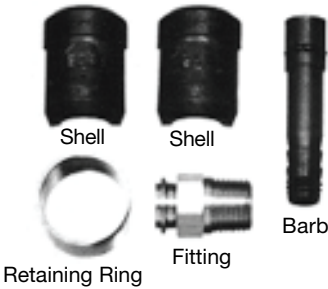
UNION ASSEMBLY
For 3/8" Hose
Part # T-A-11913

BODY
For 3/8" Hose
1/4" NPTF - **T-A-11907**
3/8" NPTF - **T-A-11908**
1/2" NPTF - **T-A-11909**

AIR BRAKE HOSE END FITTING KITS WITH SWIVEL

Contains 2 fittings to equip one hose. Meets the requirements of DOT 106 and SAE J1402. Each kit contains two corrosion resistant brass and nylon fittings with swivel ends. Kits for both 3/8" and 1/2" hose available.

3/8" I.D. X 6" LONG NOSE BOX HOSE ASSEMBLIES



Hose Size	NPTF Fitting Size	Kit Part No.
3/8"	3/8"	T-A-31402
3/8"	1/2"	T-A-31403

Press Fit Required

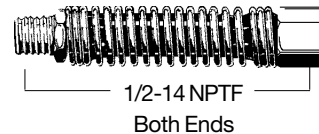
Hose Size	NPTF Fitting Size	Kit Part No.
1/2"	3/8"	T-A-31305



Interline Style
Both ends swaged.
Part No. T-A-26005

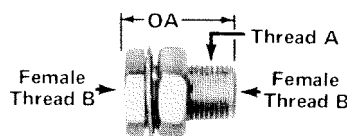
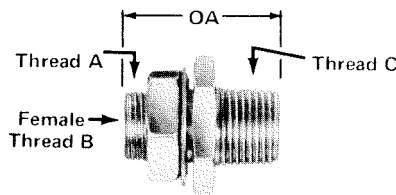
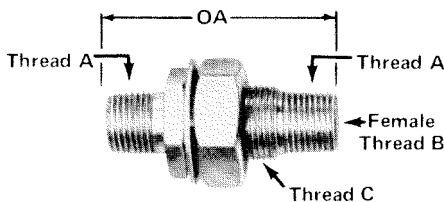


Recessed Style
Reusable fitting one end, swaged fitting opposite end.
Part No. T-A-26006



Fleetline Style
Both Ends swaged
Part No. T-A-26007

FRAME NIPPLES



Part No.	A	B	C	OAL
T-A-11300	1/2" NPTF	1/4" NPTF	1-14 UNS	2-7/8"

Part No.	A	B	C	OAL
T-A-N11171B	3/4-16 NF	1/4" NPTF	1/2" NPTF	1-11/16"
T-A-11315	1-14 UNS	1/4" NPTF	1/2" NPTF	2-1/8"
T-A-11304	1-14 UNS	3/8" NPTF	1/2" NPTF	1-5/8"

Part No.	A	B	OAL
T-A-11306	3/4-16 NF	1/4" NPTF	1-3/8"
T-A-11307	1-14 UNC	3/8" NPTF	1-3/8"

POGO STICKS AND GLADHAND ACCESSORIES

GLADHAND BRACKETS

For direct cab mount

Part # T-A-D381201



For use on pogo

Part # T-A-1011403



Part # T-A-1011402

"Dummy" Holder w/chain



40" POGO STICK Accessories

(A) **Part # T-A-34241** Nylon straps, one red, one blue, with eyebolt.

(B) **Part # T-A-1011403** Gladhand bracket Kit

Stick Part # T-A-1013543

Chromed Version of Pogo Stick

Part No. # T-A-1013544



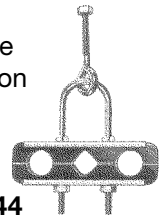
SUPPORT CLAMPS

For 3/8" I. D. Hose

Rubberized. Can be used for coiled nylon or rubber hose.

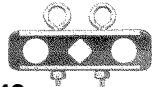
Complete with U-bolt

Part # T-A-1011544



Three hole, Double eyebolt

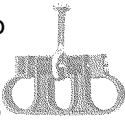
Part # T-A-1011543



HOSE CLAMPS

3 hole hose clamp For 3/8" and 1/2" I.D. hoses.

Part # T-A-11546



2 hole, single eyebolt clamp, for 3/8" hose

Part # T-A-1011541



3 hole, double eyebolt clamp, for 3/8" hose

Part # T-A-1011543



Part # T-A-1011544



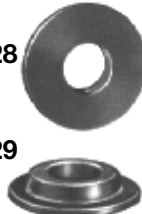
GLADHAND SEALS

Neoprene, black, full face.

Part # T-A-1010028

Neoprene, black, Compression type.

Part # T-A-1010029



40" POGO STICK

Zinc plated with yellow dichromate.

Swivels at base.

7/16"-20 stud.

Part No. T-A-1013418



HOSE SEPARATOR

Prevents hoses from rubbing together. White plastic composite



Hose Size	Part No.
3/8" I. D.	T-A-1010403
1/2" I. D.	T-A-1010404

HOSE SUPPORT SPRINGS

High tensile spring steel

Length	Part No.
12.62"	T-A-1013425
25.09"	T-A-1013423
12.38"	T-A-11601
15.42"	T-A-11603



HOSE HOLDER

For three hoses

Part # T-A-17-157



GLADHAND ELBOW-

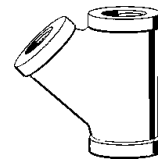
Aluminum Mounting holes 2.16" on centers 3/8" ports

Part # T-A-11312



PIPE FITTING

Galvanized. All ports 1/2" NPTF **Part # T-A-1011460**



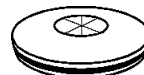
Polyurethane For extended service

Color	Part No.
Red (Emerg.)	1010031
Blue (Service)	1010030
Black	1010032

PROTECT-O SEAL

Helps prevent contamination of air system

Part # T-A-10024



GLADHAND FILTER

Air system protection

Part # T-A-1010035



GLADHAND CLAMP

Midland old style

Service: Part # T-A-D380310

Emerg: Part # T-A-D380410



GLADHANDS

STANDARD GLADHANDS

Aluminum with steel face. 1/2" -14 NPTF port.



CONFIGURATION	Part No.
Universal (No Color)	T-A-1011450
Service (Blue)	T-A-1011452
Emergency (Red)	T-A-1011451



37° BRACKET MOUNT FILTERED ALUMINUM GLADHAND

Pipe plug installed in 3/8" port.

Service:

Part # T-A-1011440

Emergency:

Part # T-A-1011441

1/2"-14 NPTF

3/8"-18 NPTF

GLADHANDS



40° ANGLE BRACKET MOUNT GLADHANDS
 Available in both 3/8" and 1/2" port sizes Polarized and color coded in emergency and service configurations. Includes full face style gladhand seal.

3/8" Ports		1/2" Ports	
CONFIGURATION	PART No.	CONFIGURATION	PART No.
Service	T-A-11440	Service	T-A-11444
Emergency	T-A-11441	Emergency	T-A-11445

DUMMY GLADHAND

Universal gladhand with reinforced cable attached to aluminum handle. Used on rear of pups. Seals air system from foreign matter.
Part No. T-A-11400



SHUT-OFF GLADHANDS

Impregnated aluminum body. Includes 1"-14 mounting stud with 1/2" nylon tubing compression fitting. Emergency gladhand has 1/4" NPTF port for pintle hook.
Service: Part # T-A-1010120
Emergency: Part # T-A-1010121



GLADHAND LOCK

Hardened Plastic Body available with various key numbers: 141, 147, 150, 156, 157
 10 per Box
Part # T-A-1011455-key number



IRON GLADHAND

Lifetime iron body will not crack or break. One piece construction. Meets all applicable requirements of SAE J318. 1/2" NPTF port.
Part # T-A-035031 Universal
Part # T-A-035032 Emergency
Part # T-A-035033 Service



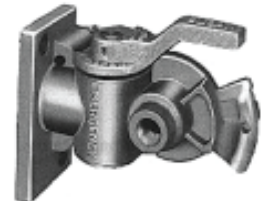
Glad Hand Grips
 "Glad-Grip"

Machined steel core saves broken air lines at the gladhand. Part number represents one color-coded pair. **Gladhands not included. Part # T-A-1010033**



SWING-AWAY GLADHANDS

Low projection profile from trailer skin. Stainless steel torsion spring. 45° swivel designed elbow permits optional air line entry from either bottom or back port. Gladhand cover prevents air system contamination. 3/8" bottom and back ports
Service: Part # T-A-441102
Emerg: Part # T-A-441103

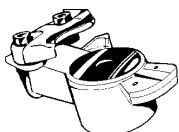


SHUT-OFF GLADHANDS

Aluminum gladhands, 1/2" NPTF port. Emergency gladhand has 1/4" NPTF port for pintle hook. Brass shut-off valve.
Service: Part # T-A-441004
Emerg: Part # T-A-441014

Qwik-E®

Pressure-Relieving Gladhand
 The first quick release valve and gladhand in one. Replaces the service gladhand at the nose of the trailer. 1/2" NPTF.
Part # T-A-1012206



Angle Surface-Mount Qwik-E®

Interchangeable with any angle gladhand. 3/8" ports.
Part # T-A-12-236

Latch-It™ Gladhand

Part No. 12-1169D
 Service gladhand, powder coat blue, w/ chrome plated Latch-It™.

Part # T-A-12-1189D
 Emergency gladhand, powder coat red, w/ chrome plated Latch-It™.



COILED AIR LINES

TRACTOR TO TRAILER COILED NYLON AIR BRAKE CONNECTIONS



Kit Number	Individual Coil Number	Tube O.D.	Valve Tail Length	Coil Ends		Working Length
				Valve	Gladhand	
T-A-7100100 (1 Red, 1 Blue)	T-A-7100101 RED	1/2"	12"	1/2	1/2	15'
	T-A-7100102 BLUE					
T-A-7100110 (1 Red, 1 Blue)	T-A-7100111 RED	1/2"	40"	1/2	1/2	15'
	T-A-7100112 BLUE					
T-A-7100120 (1 Red, 1 Blue)	T-A-7100121 RED	1/2"	6"	1/2	1/2	12'
	T-A-7100122 BLUE					

- Working Pressure to 150 PSI
- Conforms to SAE J844
- No pogo sticks or spring hangers required.
- Temperature range: -40° F to +200° F.

PHILLIPS POWER GRIP™



Kit Number	DESCRIPTION	Tube O.D.	Valve Tail Length	Coil Ends		Working Length
				Valve	Gladhand	
T-A-11-3380 (1 Red)	15' Red Coil w/ one 40" coil guard	1/2"	40"	1/2	1/2	15'
T-A-11-3390 (1 Blue)	15' Blue Coil w/ one 40" coil guard	1/2"	40"	1/2	1/2	15'
T-A-11-3400 (1 Red, 1 Blue)	15' PAIR red and blue w/ coil guard	1/2"	40"	1/2	1/2	15'

- Extra-long brass nut adds cold weather connecting leverage
- Extra-long spring is designed to function as a Nylon tubing protector
- Vertical at the tractor end, and angle-slanted at the trailer end
- 3 1/2" inch coil diameter offers greater flexibility

PHILATRON STALLION®



Kit Number	Tube DESCRIPTION	Valve Tail O.D.	Coil Ends		Working Length
			Length	Valve Gladhand	
T-A-S1-400-15CBR	15' Red & Blue Coils	1/2"	10"	1/2	15'
T-A-S3-600-15CBR	15' Red & Blue Coils	1/2"	10"	1/2	15'

- Extra Heavy Duty Service
- Meets DOT FMVSS 106 Regulations
- Three Year Warranty
- Temperature range: -70° F to +200° F.

NYLON TUBING

Type A Nylon Tubing

Heat and light stabilized single wall extruded type 11 nylon tubing available in sizes 1/8", 1/4" and 5/16". This tubing conforms to SAE specification J844 Type A. The A refers to non-reinforced tubing.



Tube O. D.	Part No.	Min. Bend Radius
1/8"	T-A-1610002	3/8"
1/4"	T-A-1610004	1"
5/16"	T-A-1610005	1 1/4"

Vinyl Coated Tubing Clamps

I.D.	Part No.	I.D.	Part No.
1/4"	T-A-1011120	5/8"	T-A-1011124
5/16"	T-A-1011121	3/4"	T-A-1011125
3/8"	T-A-1011122	1 1/4"	T-A-1011127
1/2"	T-A-1011123	1 5/16"	T-A-1011126



PFT Type B Nylon Tubing

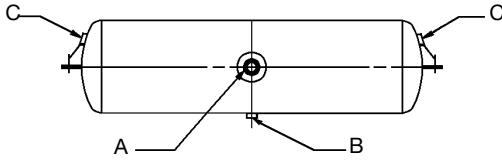
Heat and light stabilized seamless extruded nylon 11 core reinforced with one open ply of fibrous reinforcement and a protective nylon 11 cover sheath. The outer cover and core are fused to minimize leakage and maximize impact resistance and are always of contrasting colors. This tubing conforms to SAE J844 Type B. The B refers to reinforced tubing.

Maximum working pressure 150 PSI.

Tube I. D.	Part No.	Minimum Bend Radius
3/8"	T-A-1610006	1 1/2"
3/8"	T-A-1610006-BLUE	1 1/2"
3/8"	T-A-1610006-RED	1 1/2"
1/2"	T-A-1610008	2"
1/2"	T-A-1610008-BLUE	2"
1/2"	T-A-1610008-RED	2"
5/8"	T-A-1610010	2 1/2"
3/4"	T-A-1610012	3"

AIR TANKS

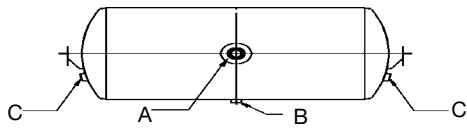
***Note:** On tanks with more than one main port, port locations are 180 degrees from each other unless noted otherwise.
Tanks listed by Diameter Size.



1 Main Port*

8 Inch Diameter, 1425 Cubic Inch Capacity
Mounting Holes 32 Inches Center to Center

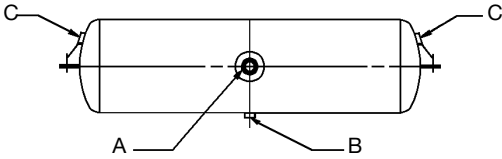
Part No.	(A) Main Port*	(B) Drain Port (1)	(C) End Ports (2)
T-A-1010328	3/4" NPTF (*1)	1/4" NPTF	3/8" NPTF



2 Main Ports*

8 Inch Diameter, 1425 Cubic Inch Capacity
Mounting Holes 32 Inches Center to Center

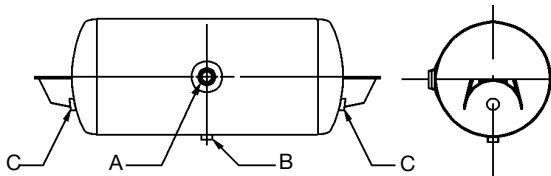
Part No.	(A) Main Port*	(B) Drain Port (1)	(C) End Ports (2)
T-A-1010334	3/4" NPTF (*2)	1/4" NPTF	3/8" NPTF



2 Main Ports*

8 Inch Diameter, 1425 Cubic Inch Capacity
Mounting Holes 32 Inches Center to Center

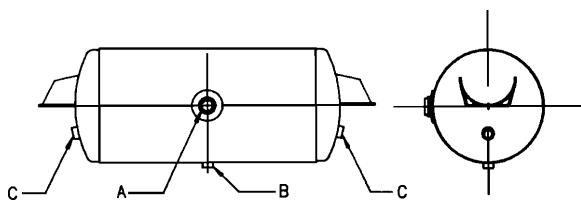
Part No.	(A) Main Port (2)	(B) Drain Port (1)	(C) End Ports (2)
T-A-1010340	3/4" NPTF	1/4" NPTF	3/8" NPTF



2 Main Ports*

9.5 Inch Diameter, 1488 Cubic Inch Capacity
Mounting Holes 27.5 Inches Center to Center.

Part No.	(A) Main Port (2)	(B) Drain Port (1)	(C) End Ports (2)
T-A-N9508-AA	3/4" NPTF	1/4" NPTF	3/8" NPTF

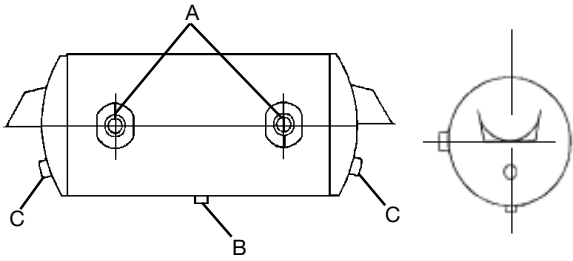


2 Main Ports*

9.5 Inch Diameter, 1488 Cubic Inch Capacity
Mounting Holes 27.5 Inches Center to Center.

Part No.	(A) Main Port (2)	(B) Drain Port (1)	(C) End Ports (2)
T-A-1010336	3/4" NPTF	1/4" NPTF	3/8" NPTF

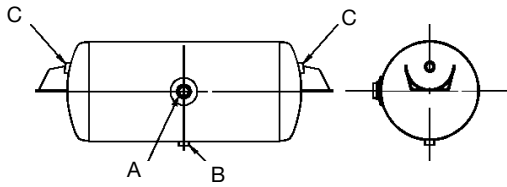
AIR TANKS



2
Main
Ports*

9.5 Inch Diameter, 1488 Cubic Inch Capacity
Mounting Holes 27.5 Inches Center to Center.

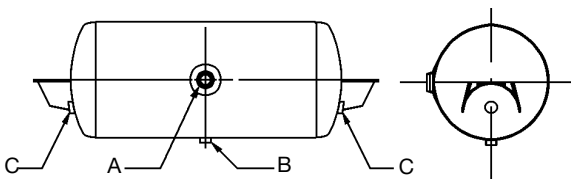
Part No.	(A) Main Port (2)	(B) Drain Port (1)	(C) End Ports (2)
T-A-1010337	3/4" NPTF	1/4" NPTF	1/2" NPTF



2
Main
Ports*

9.5 Inch Diameter, 1488 Cubic Inch Capacity
Mounting Holes 27.5 Inches Center to Center.

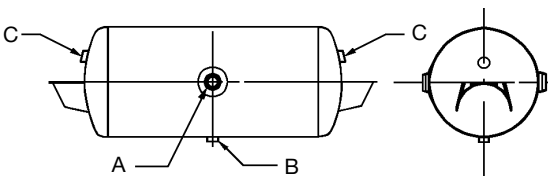
Part No.	(A) Main Port (2)	(B) Drain Port (1)	(C) End Ports (2)
T-A-1010341	1/2" NPTF	1/4" NPTF	1/2" NPTF



1
Main
Port*

9.5 Inch Diameter, 1488 Cubic Inch Capacity
Mounting Holes 27.5 Inches Center to Center.

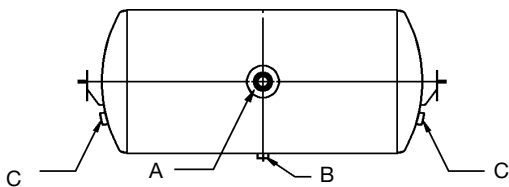
Part No.	(A) Main Port (2)	(B) Drain Port (1)	(C) End Ports (2)
T-A-1010343	HYDRAULIC RESERVIOR		
T-A-1010344	3/4" NPTF	1/4" NPTF	3/8" NPTF



2
Main
Ports*

9.5 Inch Diameter, 1488 Cubic Inch Capacity
Mounting Holes 27.5 Inches Center to Center.

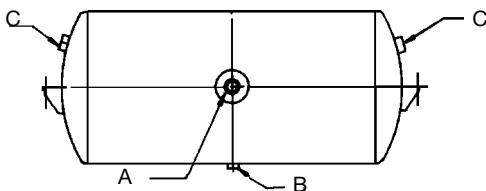
Part No.	(A) Main Port (2)	(B) Drain Port (1)	(C) End Ports (2)
T-A-1010330	1/2" NPTF	1/4" NPTF	3/8" NPTF
T-A-1010342	1/2" NPTF	1/4" NPTF	1/2" NPTF



2
Main
Ports*

12 Inch Diameter, 2850 Cubic Inch Capacity
Mounting Holes 29.5 Inches Center to Center.

Part No.	(A) Main Port (2)	(B) Drain Port (1)	(C) End Ports (2)
T-A-1010329	3/4" NPTF	1/4" NPTF	3/8" NPTF

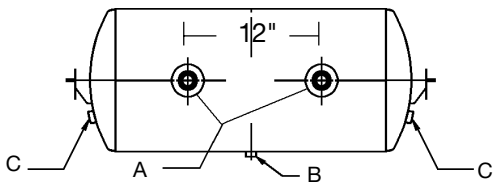


2
Main
Ports*

12 Inch Diameter, 2850 Cubic Inch Capacity
Mounting Holes 29.5 Inches Center to Center.

Part No.	(A) Main Port (2)	(B) Drain Port (1)	(C) End Ports (2)
T-A-1010331	1/2" NPTF	1/4" NPTF	3/8" NPTF

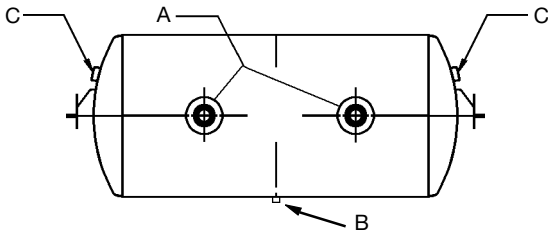
AIR TANKS



3 Main Ports*

12 Inch Diameter, 2850 Cubic Inch Capacity
Mounting Holes 12 Inches Center to Center.

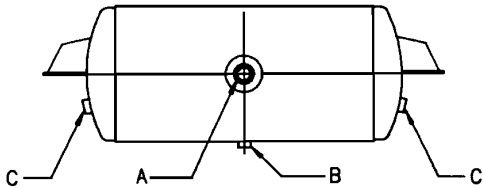
Part No.	(A) Main Port (3)	(B) Drain Port (1)	(C) End Ports (2)
T-A-1010332	3/4" NPTF	1/4" NPTF	3/8" NPTF



2 Main Ports*

12 Inch Diameter, 2850 Cubic Inch Capacity
Mounting Holes 29.5 Inches Center to Center.

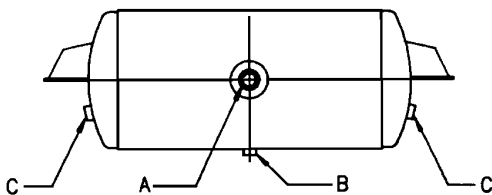
Part No.	(A) Main Port (2)	(B) Drain Port (1)	(C) End Ports (2)
T-A-1010335	3/4" NPTF	1/4" NPTF	3/8" NPTF



1 Main Ports*

12 Inch Diameter, 2850 Cubic Inch Capacity
Mounting Holes 29.5 Inches Center to Center.

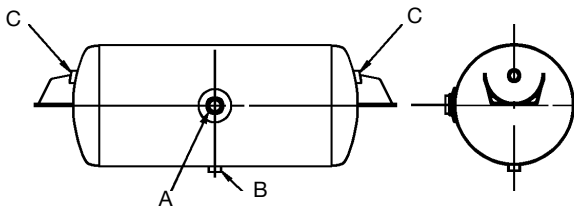
Part No.	(A) Main Port (1)	(B) Drain Port (1)	(C) End Ports (2)
T-A-1010338	3/4" NPTF	1/4" NPTF	3/8" NPTF



2 Main Ports*

12 Inch Diameter, 2850 Cubic Inch Capacity
Mounting Holes 29.5 Inches Center to Center.

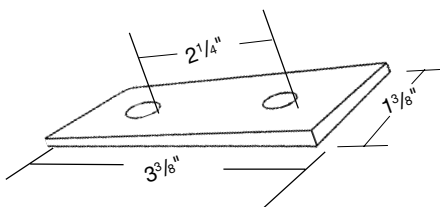
Part No.	(A) Main Port (2)	(B) Drain Port (1)	(C) End Ports (2)
T-A-1010339	3/4" Front, 1/2" Back	1/4" NPTF	3/8" NPTF



2 Main Ports*

13 Inch Diameter, 3000 Cubic Inch Capacity
Mounting Holes 27.5 Inches Center to Center.

Part No.	(A) Main Port (2)	(B) Drain Port (1)	(C) End Ports (2)
T-A-1010333	3/4" NPTF	1/4" NPTF	1/2" NPTF



AIR TANK MOUNTING PAD

3/16" THICK RUBBER

1 1/8" wide, 3 3/8" long, 3/8" holes on 2 1/4" centers.

Two required per tank.

Part No. T-A-HT-1068